

BMSH SERIES SINGLE ACTING HOLLOW PISTON CYLINDER

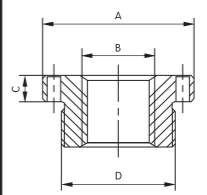
CAPACITY: 13-100T
MAX. PRESSURE: 700 Bar



The BMSH-series is a spring return hollow piston rod cylinder. The hollow piston allows for a rod or cable to be inserted through the entire body length. They can be used in tensioning, load testing and bush extracting and maintenance applications. All BMSH-Series cylinders feature a hard chrome cylinder bore and piston rod for maximum corrosion resistance and a bronze overlay piston bearing area to reduce scoring and increase service life. All cylinders incorporate a bolt on removable steel base plate for extra protection.

Saddle Selection

| Saddle Model | Cylinder Model | Saddle Size | | | |
|--------------|----------------|-------------|-------------------|---------|-----------------|
| | | A in | B in | C in | D in |
| SH-2015 | BMSH-202, 206 | 2.09 | 1" - 8UNC | 0.35 | 1-9/16" - 16UN |
| SH-3015 | BMSH-302, 306 | 2.48 | 1-1/4" - 7UN | 0.35 | 1-13/16" - 16UN |
| SH-5016 | BMSH-603, 606 | 3.58 | 1-5/8" - 5-1/2"UN | 0.47 | 2-3/4" - 16UN |
| SH-10016 | BMSH-1003 | 4.96 | 2-1/2" - 8UN | 0.51 | 4" - 16UN |

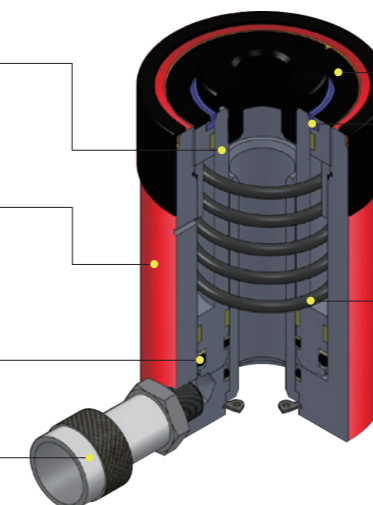


Hardened and chromed piston reduces wear and corrosion

High strength alloy steel body is precision machined to reduce wear and features a baked enamel finish for durability and corrosion protection

Industrial U-cup style seal prevents costly leaks

Standard coupler provided with dust cover



Hardened alloy steel guide ring eliminates over travel and provides support to reduce wear from off center loads

Heavy-duty wiper ring keeps dust and debris out of the cylinder body, improving performance and service life of the cylinder

Heavy-duty, straight pull return springs provide quick retraction times

Safety Practices
Good industry practice recommends not exceeding 80% of the max. rated capacity.

| Model | Capacity@10,000 PSI (700 bar) | Stroke | Effective Area | Oil Capacity | Closed Height | Extended Height | Collar Thread | Collar Thread Length | Outside Diam. |
|-----------|-------------------------------|--------|-----------------|-----------------|---------------|-----------------|---------------|----------------------|---------------|
| | | | | | | | | | |
| | Metric Ton | mm | cm ² | cm ³ | mm | mm | in | mm | mm |
| BMSH-120 | 13 | 8 | 18.4 | 14.7 | 55 | 63 | 2 3/4"-16 | 30 | 70 |
| BMSH-121 | | 42 | 18.4 | 77.3 | 120 | 162 | 2 3/4"-16 | 30 | 70 |
| BMSH-123 | | 76 | 18.4 | 140 | 184 | 260 | 2 3/4"-16 | 30 | 70 |
| BMSH-202 | 20 | 49 | 32.8 | 161 | 162 | 211 | 3 7/8"-12 | 38 | 99 |
| BMSH-206 | | 155 | 32.8 | 508 | 306 | 461 | 3 7/8"-12 | 38 | 99 |
| BMSH-302 | 30 | 64 | 48 | 307 | 179 | 242 | 4 1/2"-12 | 42 | 115 |
| BMSH-306 | | 155 | 48 | 744 | 330 | 485 | 4 1/2"-12 | 42 | 115 |
| BMSH-603 | 60 | 76 | 87.4 | 664 | 247 | 322 | 6 1/4"-12 | 48 | 159 |
| BMSH-606 | | 153 | 87.4 | 1337 | 323 | 476 | 6 1/4"-12 | 48 | 159 |
| BMSH-1003 | 100 | 76 | 135.2 | 1028 | 254 | 330 | 8 3/8"-12 | 60 | 212 |

| Piston Diam. | Piston Inner Thread | Thread Length | Base Mounting Holes | | | Center Hole Diam. | Weight | Model |
|--------------|---------------------|---------------|---------------------|----------|--------------|-------------------|--------|-----------|
| | | | Bolt Circle | Thread | Thread Depth | | | |
| F | O | P | U | V | Z | Y | kg | |
| 35 | 3/4"-16 UN | 16 | 50.8 | 5/16"-18 | 8.9 | 19.6 | 1.7 | BMSH-120 |
| 35 | - | - | - | - | - | 19.6 | 3 | BMSH-121 |
| 35 | - | - | 50.8 | 5/16"-18 | 8.9 | 19.6 | 4.7 | BMSH-123 |
| 55 | 1 9/16"-16 UN | 19 | 82.5 | 3/8"-16 | 9.4 | 26.9 | 8 | BMSH-202 |
| 55 | 1 9/16"-16 UN | 19 | 82.5 | 3/8"-16 | 9.4 | 26.9 | 14.5 | BMSH-206 |
| 65 | 1 13/16"-16 UN | 22 | 92.2 | 3/8"-16 | 14.0 | 33.3 | 11.5 | BMSH-302 |
| 65 | 1 13/16"-16 UN | 22 | 92.2 | 3/8"-16 | 14.0 | 33.3 | 23 | BMSH-306 |
| 92 | 2 3/4"-16 UN | 19 | 130.3 | 1/2"-13 | 14.0 | 53.8 | 30 | BMSH-603 |
| 92 | 2 3/4"-16 UN | 19 | 130.3 | 1/2"-13 | 14.0 | 53.8 | 37.5 | BMSH-606 |
| 127 | 4"-16 UN | 25 | 177.8 | 5/8"-11 | 20.1 | 79 | 62 | BMSH-1003 |

